

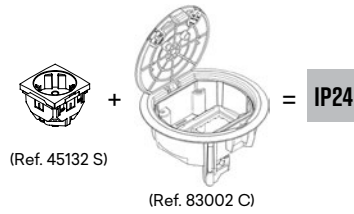
Floor Box - 4 Modules

Description

Ref. 83002 C



Box for concrete installation through Flush Mounting Boxes (Ref. 83052) and on technical floor through claws.
Available in colours **CZ** - Grey, **AT** - Anthracite and **BR** - White.
Applicable with **MEC Q45** devices.

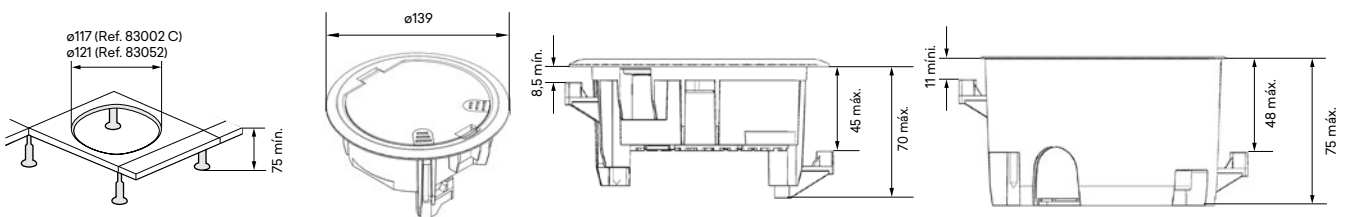


Mounting Diagram



- 1 - Floor Box Cover - 4 Modules.
- 2 - Self-tapping screws for plastic claw.
- 3 - Floor Box - 4 Modules (Ref. 83002 C).
- 4 - Self-tapping screws for plastic claw.
- 5 - Flush Mounting Box for Floor Box - 4 Modules (Ref. 83052).
- 6 - Plastic claw for Floor Box.

Dimensions (mm)



Floor Boxes - 8, 12, 16, 24 Modules

Description



IK10

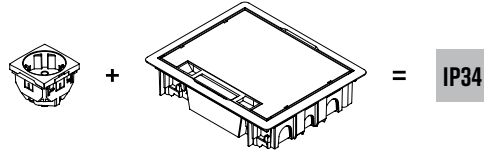
Ref. 83004 C | 83006 C | 83008 C | 83012 C

Box for concrete installation through Flush Mounting Boxes and on technical floor through claws.

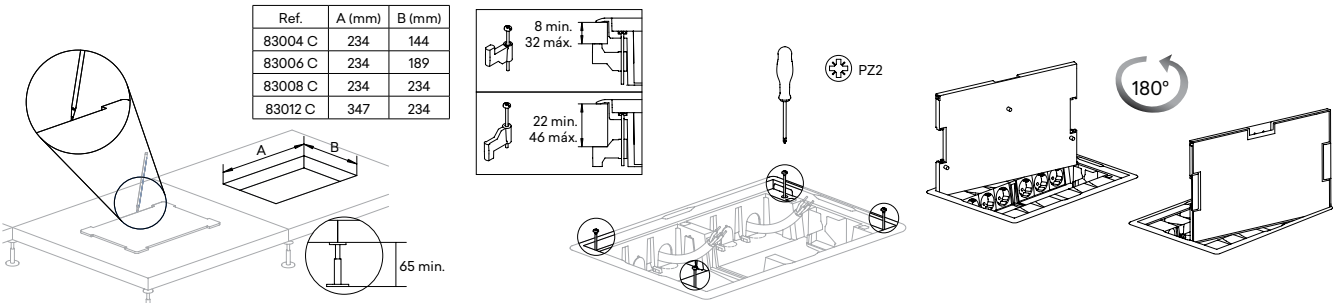
Available in colours **CZ** - Grey, **AT** - Anthracite.

Available with Inox Cover (Ref. 83008 C) in colours: **ZI** - Grey/Inox, **AI** - Anthracite/Inox.

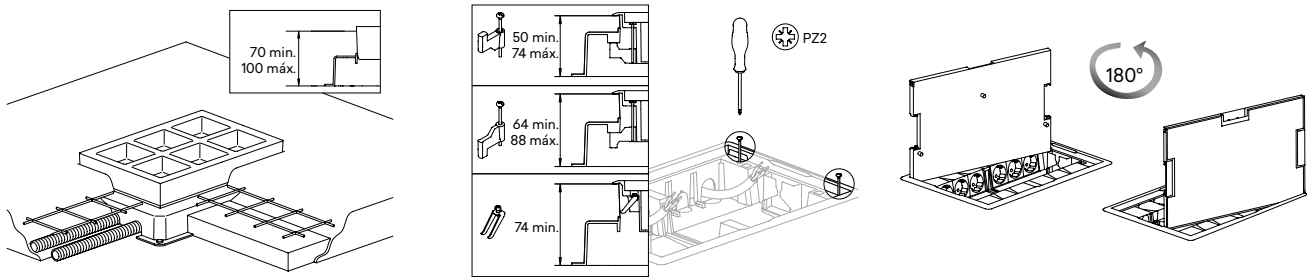
Applicable with MEC **Q45** devices.



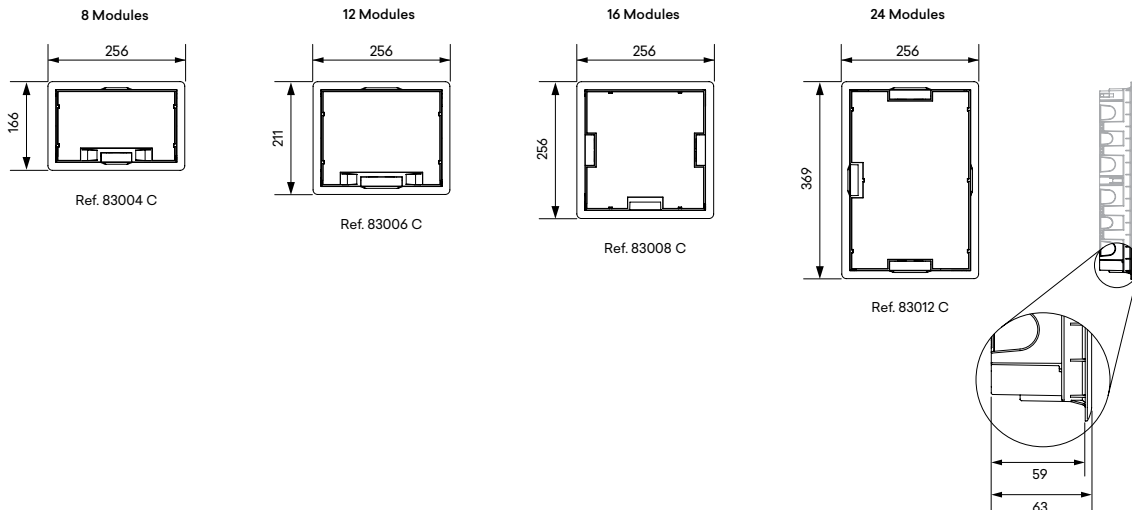
Installation in Technical Floor



Installation in Concrete with Flush Mounting Box



Dimensions (mm)



EN 60670-1; EN 60670-23 Standards

Section 7	Classification	4, 8, 12, 16 and 24 Modules
7.1	Nature of the material	Insulating
7.2	Type of installation	Embedded, semi-embedded or integrated into combustible walls, ceilings or flooring
		Embedded, semi-embedded or integrated into hollow or partition walls (false ceilings, walls, floors), furniture
		For tunnel type installation during the concrete projection step (7.6)
		Treatment of flooring: in boxes and enclosures for installation in floorings submitted to dry treatment
7.3	Types of inputs (outputs)	With inputs for plain or corrugated pipes
7.4	Means for fixing cables and pipes	Without fixing
7.5	Minimum and maximum temperatures during the installation	-25 °C to +60 °C
7.6	Maximum temperature during the concrete filling step	90 °C
7.8	Means for fixing the devices to the boxes	Boxes designed to enable other means of fixing
7.101	Type of movable cover	Enclosure with removable cover

Tests - EN 50085-1; EN 50085-2-2 Standards

Section 10	Classification	4 Modules	8, 12, 16 and 24 Modules
10.3.2	Impact test of mechanical resistance for installation and application	2 J	5 J
10.3.2	EN 50102 - IK Test	IK08	IK10
10.5.1	IEC 60884-1 – NP 1260 Fixation of low voltage devices - resistance to extraction test	Declared Force of Extraction: 90 N 1,5 x 90 = 135 N	
10.5.103	Resistance to vertical load applied through a small surface area	750 N	
10.5.104	Resistance to vertical load applied through a large surface area	3000 N	