



# CorePro LED tube EM/ Mains T8



## CorePro LEDtube 600mm 8W 865 T8

CorePro, LEDtube, T8, EM/Mains, 600 mm, 8 W, 18W TL-D, 6500 K, 800 lm, CRI 80, 50000 hour(s)

Philips CorePro LEDtubes are the quick and easy way to replace T8 fluorescent or other LED tubes with a fast pay back time. Not only does the Core range of LEDtubes require a low initial investment, but LED energy efficiency also delivers instant savings that you can bank on over a long and reliable lifetime. Plus, with the same lamp size and light distribution as fluorescent alternatives, you'll never know the difference. There are two ways to install these LED tubes: Rewire your existing fluorescent-based luminaires so the CorePro LEDtubes work directly on the Mains. Or simply change the fluorescent starter to an LED starter that can be used with your Electromagnetic ballasts.

### Warnings and Safety

- NOTE: The overall energy efficiency and light distribution of any installation that uses these lamps will be determined by the design of the installation.
- Installation must be done according to the installation diagrams provided with the lamp or available online. Installation must be done by a certified professional.

### Product data

General Information		Flux measurement reference	Sphere
Cap-Base	G13	<b>Light Technical</b>	
Nominal lifetime	50,000 hour(s)	Color Code	865 [CCT of 6500K]
Switching Cycle	200,000	Beam Angle (Nom)	240 degree(s)
Lighting Technology	LEDtube	Luminous Flux	800 lm

# CorePro LED tube EM/Mains T8

Color Designation	Cool Daylight
Correlated Color Temperature (Nom)	6500 K
Luminous Efficacy (rated) (Nom)	100 lm/W
Color Consistency	<6
Color rendering index (CRI)	80
LLMF At End Of Nominal Lifetime (Nom)	70 %
Photobiological safety according to EN 62471	RG0

## Operating and Electrical

Line Frequency	50 to 60 Hz
Input Frequency	50 to 60 Hz
Power Consumption	8 W
Lamp Current (Nom)	46 mA
Starting Time (Nom)	0.5 s
Warm-up time to 60% light	0.5 s
Power Factor (Fraction)	0.9
Voltage (Nom)	220-240 V
LED alternative to fluorescent lamp power	18W TL-D
Inrush current at mains	4.27
Max. lamp no. on MCB B type 10A - Mains	119
Max. lamp no. on MCB B type 10A – EM ballast without Compensation Capacitor.	154
Max. lamp no. on MCB B type 10A – EM ballast with Compensation Capacitor.	24
Max. lamp no. on MCB B type 16A - Mains	191
Max. lamp no. on MCB B type 16A – EM ballast without Compensation Capacitor.	246
Max. lamp no. on MCB B type 16A – EM ballast with Compensation Capacitor.	39
Ballast Compatibility	EM/Mains

## Temperature

T-Case Maximum (Nom)	50 °C
----------------------	-------

## Controls and Dimming

Dimmable	No
----------	----

## Mechanical and Housing

Bulb Finish	Frosted
-------------	---------

Bulb Material	Glass
Product Length	600 mm
Bulb Shape	T8
Net Weight (Piece)	0.120 kg

## Approval and Application

Energy Efficiency Class	F
Energy Saving Product	Yes
Approval Marks	RoHS compliance CE marking KEMA Keur certificate
Energy Consumption kWh/1000 h	8 kWh
EPREL Registration Number	1827701
CE mark	Yes
EU RoHS compliant	Yes
Flickering value (PstLM) - Flickering value as per EN 61000-3-3	1
Stroboscopic effect visibility measure (SVM)	0.4
Ambient temperature range	-20 to +45 °C

## Application Conditions

can it be used in closed luminaires	Yes
-------------------------------------	-----

## Product Data

Order product name	CorePro LEDtube 600mm 8W 865 T8
Full product name	CorePro LEDtube 600mm 8W 865 T8
Full product code	871951445979300
Order code	929003547302
Material Nr. (12NC)	929003547302
Numerator - Quantity Per Pack	1
EAN/UPC - Product/Case	8719514459793
Numerator - Packs per outer box	20
EAN/UPC - Case	8719514459809

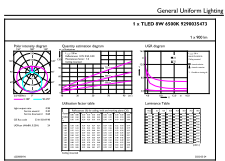
# CorePro LED tube EM/Mains T8

## Dimensional drawing

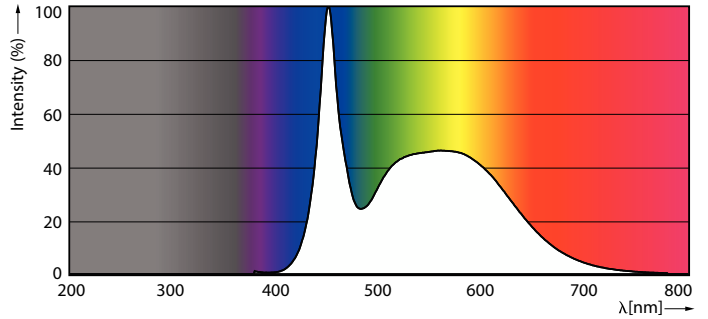


Product	D1	D2	A1	A2	A3
CorePro LEDtube 600mm 8W 865 T8	25.7 mm	28 mm	588.5 mm	595.5 mm	602.5 mm

## Photometric data

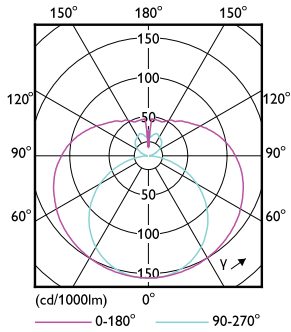


© 2024 Philips Lighting B.V. Page 10/11



General uniform lighting - CorePro LEDtube 600mm 8W 865 T8

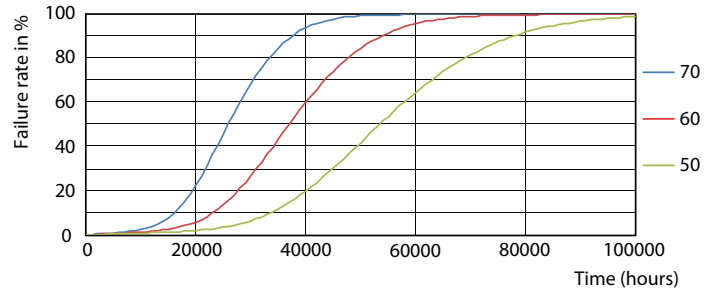
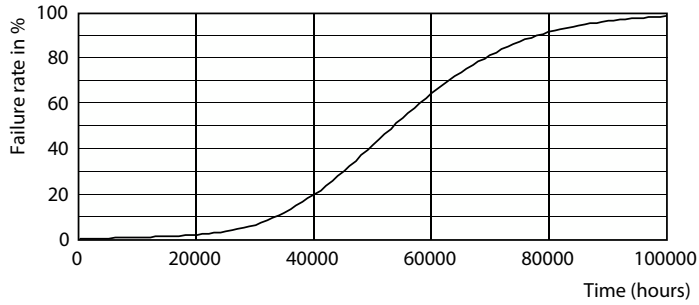
Spectral Power Distribution Colour - CorePro LEDtube 600mm 8W 865 T8



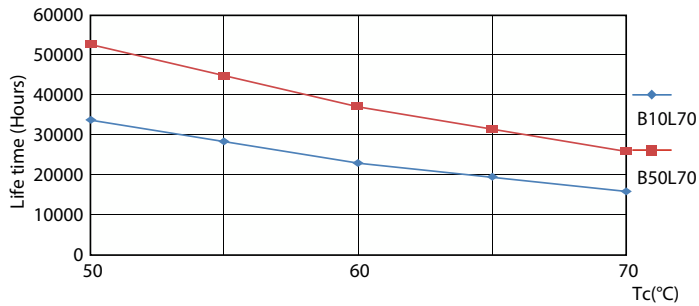
Light Distribution Diagram - CorePro LEDtube 600mm 8W 865 T8

# CorePro LED tube EM/Mains T8

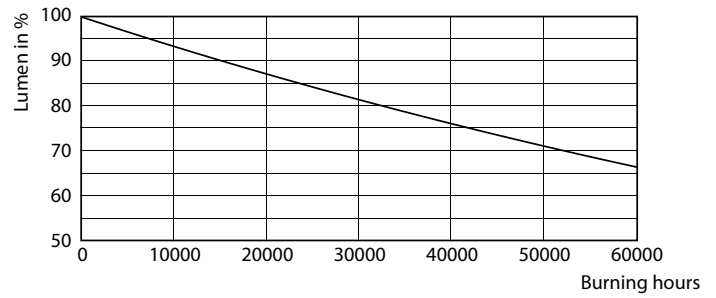
## Lifetime



Life Expectancy Diagram



FailureRate



LifetimeVsTc

Lumen Maintenance Diagram - CorePro LEDtube 600mm 8W 865 T8

