



CorePro LED PLC 4P



CorePro LED PLC 6.5W 840 4P G24q-2

The CorePro LED PLC 4P integrates a LED light source into a traditional fluorescent form factor. This product is the ideal solution for uplamping in general lighting applications: it meets basic lighting requirements, offers significant energy savings, and is environmentally friendly.

Product data

General Information	
Cap-Base	G24q-2 ROT
Nominal lifetime	30,000 hour(s)
Switching Cycle	200,000
Lighting Technology	LED
Flux measurement reference	Sphere
Light Technical	
Color Code	840 [CCT of 4000K]
Beam Angle (Nom)	120 degree(s)
Luminous Flux	770 lm
Color Designation	Cool White (CW)
Correlated Color Temperature (Nom)	4000 K
Luminous Efficacy (rated) (Nom)	118 lm/W
Color Consistency	<6
Color rendering index (CRI)	82
LLMF At End Of Nominal Lifetime (Nom)	70 %
Operating and Electrical	
Input Frequency	50 to 60 Hz
Power Consumption	6.5 W
Lamp Current (Nom)	35 mA
Starting Time (Nom)	0.5 s

Warm-up time to 60% light	0.5 s
Power Factor (Fraction)	0.9
Voltage (Nom)	220-240 V
Ballast Compatibility	HF/Mains
LED alternative to fluorescent lamp power	18 W
Inrush current at mains	-
Max. lamp no. on MCB B type 10A - Mains	-
Max. lamp no. on MCB B type 10A – EM ballast without Compensation Capacitor.	-
Max. lamp no. on MCB B type 10A – EM ballast with Compensation Capacitor.	-
Max. lamp no. on MCB B type 16A - Mains	-
Max. lamp no. on MCB B type 16A – EM ballast without Compensation Capacitor.	-
Max. lamp no. on MCB B type 16A – EM ballast with Compensation Capacitor.	-
Temperature	
T-Case Maximum (Nom)	70 °C
Controls and Dimming	
Dimmable	No

CorePro LED PLC 4P

Mechanical and Housing

Bulb Finish	Frosted
Bulb Material	Plastic
Product Length	128 mm
Bulb Shape	PL-C
Net Weight (Piece)	0.100 kg

Approval and Application

Energy Efficiency Class	E
Energy Saving Product	Yes
Approval Marks	RoHS compliance
Energy Consumption kWh/1000 h	7 kWh
EPREL Registration Number	1945437
CE mark	Yes
EU RoHS compliant	Yes
Ambient temperature range	-20 to +45 °C

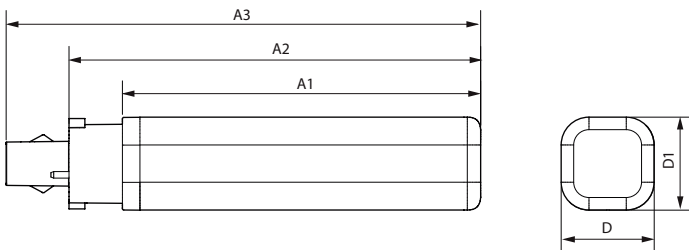
Application Conditions

can it be used in closed luminaires	Yes
-------------------------------------	-----

Product Data

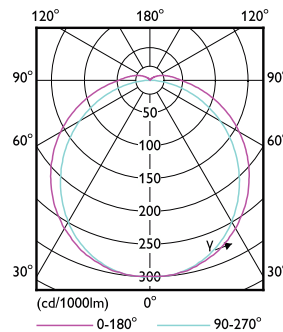
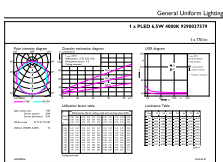
Order product name	CorePro LED PLC 6.5W 840 4P G24q-2
Full product name	CorePro LED PLC 6.5W 840 4P G24q-2
Full product code	872016929047100
Order code	929003757902
Material Nr. (12NC)	929003757902
Numerator - Quantity Per Pack	1
EAN/UPC - Product/Case	8720169290471
Numerator - Packs per outer box	10
EAN/UPC - Case	8720169290488

Dimensional drawing



Product	D1	D2	A1	A2	A3
CorePro LED PLC 6.5W 840 4P G24q-2	34 mm	34 mm	109 mm	128 mm	144 mm

Photometric data

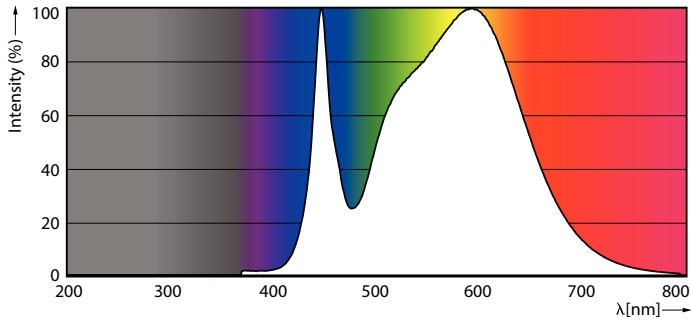


General uniform lighting - CorePro LED PLC 6.5W 840 4P G24q-2

Light Distribution Diagram - CorePro LED PLC 6.5W 840 4P G24q-2

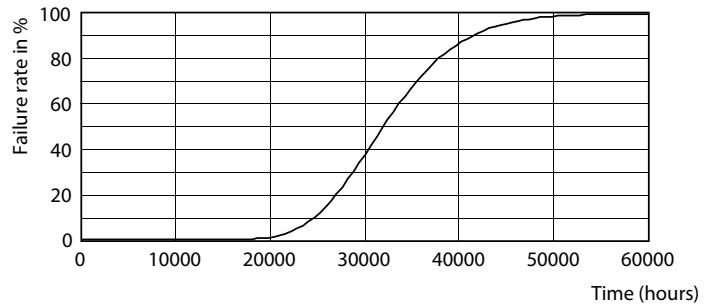
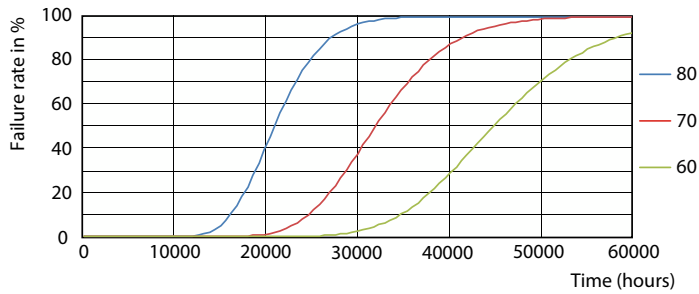
CorePro LED PLC 4P

Photometric data



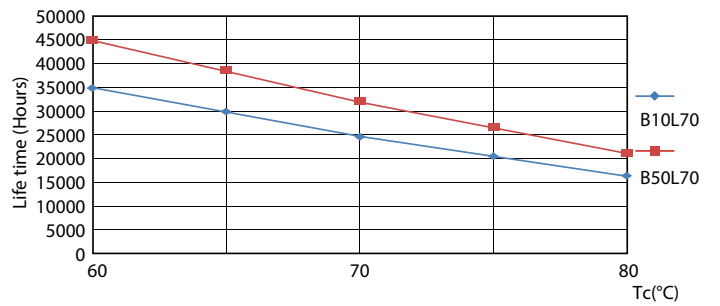
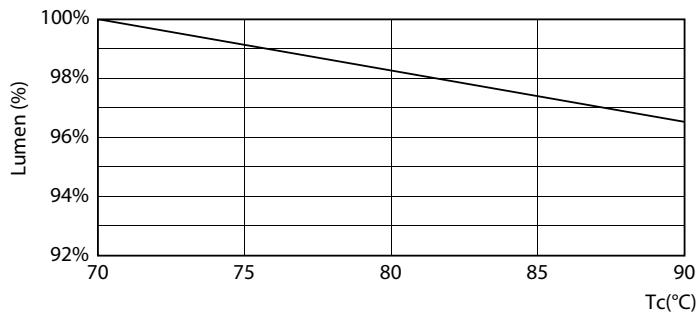
Spectral Power Distribution Colour - CorePro LED PLC 6.5W 840 4P G24q-2

Lifetime



FailureRate

Life Expectancy Diagram

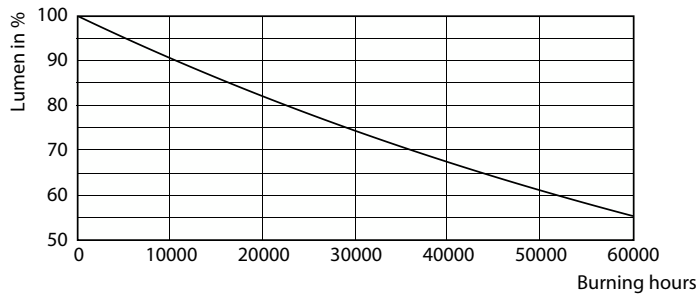


Lumen Maintenance Diagram - CorePro LED PLC 6.5W 840 4P G24q-2

LifetimeVsTc

CorePro LED PLC 4P

Lifetime



Lumen Maintenance Diagram - CorePro LED PLC 6.5W 840 4P G24q-2

