



# CorePro LED PLC 4P



## CorePro LED PLC 5.5W 830 4P G24q-1

The CorePro LED PLC 4P integrates a LED light source into a traditional fluorescent form factor. This product is the ideal solution for uplamping in general lighting applications: it meets basic lighting requirements, offers significant energy savings, and is environmentally friendly.

### Product data

General Information		Warm-up time to 60% light	
Cap-Base	G24q-1 ROT	Power Factor (Fraction)	0.5 s
Nominal lifetime	30,000 hour(s)	Voltage (Nom)	0.9
Switching Cycle	200,000	LED alternative to fluorescent lamp power	220-240 V
Lighting Technology	LED	Inrush current at mains	13 W
Flux measurement reference	Sphere	Max. lamp no. on MCB B type 10A - Mains	-
		Max. lamp no. on MCB B type 10A – EM ballast without Compensation Capacitor.	-
		Max. lamp no. on MCB B type 10A – EM ballast with Compensation Capacitor.	-
		Max. lamp no. on MCB B type 16A - Mains	-
		Max. lamp no. on MCB B type 16A – EM ballast without Compensation Capacitor.	-
		Max. lamp no. on MCB B type 16A – EM ballast with Compensation Capacitor.	-
		Ballast Compatibility	HF/Mains
Light Technical		Temperature	
Color Code	830 [CCT of 3000K]	T-Case Maximum (Nom)	70 °C
Beam Angle (Nom)	120 degree(s)		
Luminous Flux	600 lm	Controls and Dimming	
Color Designation	White (WH)	Dimmable	No
Correlated Color Temperature (Nom)	3000 K		
Luminous Efficacy (rated) (Nom)	109 lm/W		
Color Consistency	<6		
LLMF At End Of Nominal Lifetime (Nom)	70 %		
Color rendering index (CRI)	82		
Operating and Electrical			
Input Frequency	50 to 60 Hz		
Power Consumption	5.5 W		
Lamp Current (Nom)	30 mA		
Starting Time (Nom)	0.5 s		

# CorePro LED PLC 4P

## Mechanical and Housing

Bulb Finish	Frosted
Bulb Material	Plastic
Product Length	100 mm
Bulb Shape	PL-C

## Approval and Application

Energy Efficiency Class	F
Energy Saving Product	Yes
Approval Marks	RoHS compliance
Energy Consumption kWh/1000 h	6 kWh
EPREL Registration Number	1945441
CE mark	Yes
EU RoHS compliant	Yes
Ambient temperature range	-20 to +45 °C

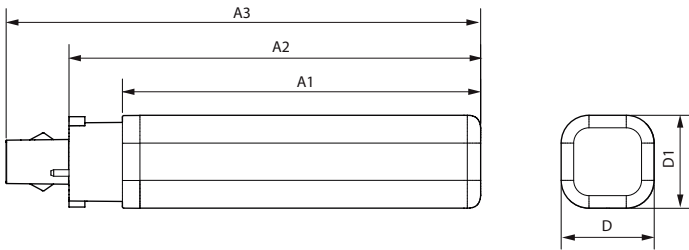
## Application Conditions

can it be used in closed luminaires	Yes
-------------------------------------	-----

## Product Data

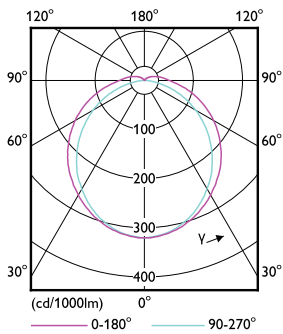
Order product name	CorePro LED PLC 5.5W 830 4P G24q-1
Full product name	CorePro LED PLC 5.5W 830 4P G24q-1
Full product code	872016929041900
Order code	929003757602
Material Nr. (12NC)	929003757602
Numerator - Quantity Per Pack	1
Net Weight (Piece)	0.100 kg
EAN/UPC - Product/Case	8720169290419
Numerator - Packs per outer box	10
EAN/UPC - Case	8720169290426

## Dimensional drawing

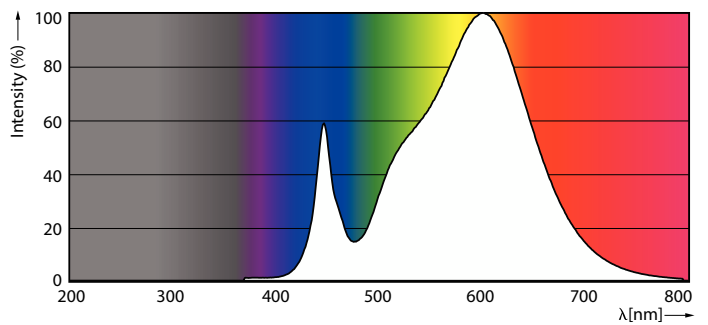


Product	D1	D	A1	A2	A3
CorePro LED PLC 5.5W 830 4P G24q-1	34 mm	34 mm	109 mm	128 mm	144 mm

## Photometric data



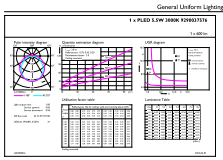
Light Distribution Diagram - CorePro LED PLC 5.5W 830 4P G24q-1



Spectral Power Distribution Colour - CorePro LED PLC 5.5W 830 4P G24q-1

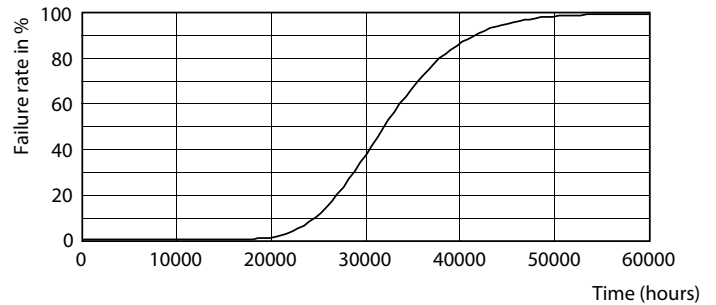
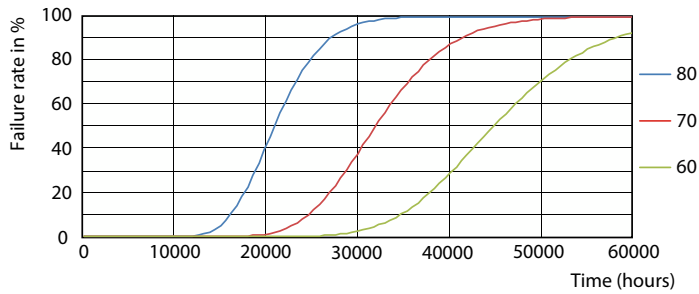
# CorePro LED PLC 4P

## Photometric data

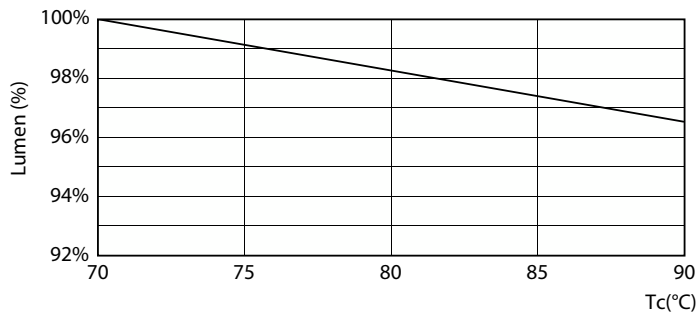


General uniform lighting - CorePro LED PLC 5.5W 830 4P G24q-1

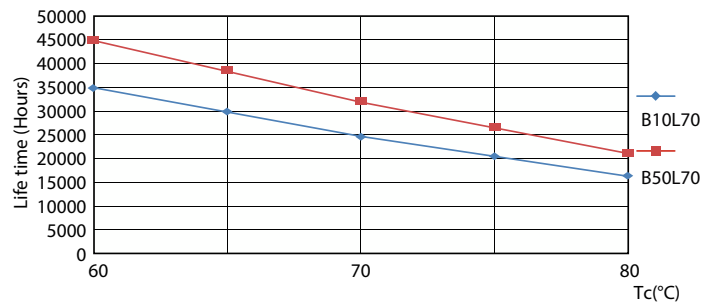
## Lifetime



FailureRate



Life Expectancy Diagram

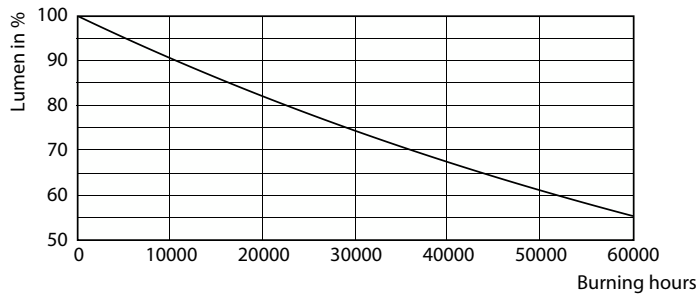


Lumen Maintenance Diagram - CorePro LED PLC 5.5W 830 4P G24q-1

LifetimeVsTc

# CorePro LED PLC 4P

## Lifetime



Lumen Maintenance Diagram - CorePro LED PLC 5.5W 830 4P G24q-1

