



CorePro LED PLT 4P



CorePro LED PLT HF 6.5W 830 4P GX24q-2

The CorePro LED PLT 4P integrates a LED light source into a traditional fluorescent form factor. This product is the ideal solution for uplampping in general lighting applications: it meets basic lighting requirements, offers significant energy savings, and is environmentally friendly

Product data

General Information		Lamp Current (Max)	
Cap-Base	GX24q-2		300 mA
Nominal lifetime	30,000 hour(s)	Lamp Current (Min)	150 mA
Switching Cycle	200,000	Starting Time (Nom)	0.5 s
Lighting Technology	LED	Warm-up time to 60% light	0.5 s
Flux measurement reference	Sphere	Power Factor (Fraction)	0.9
		Voltage (Nom)	20-60 V
		LED alternative to fluorescent lamp power	18 W
		Inrush current at mains	-
		Max. lamp no. on MCB B type 10A - Mains	-
		Max. lamp no. on MCB B type 10A – EM ballast without Compensation Capacitor.	-
		Max. lamp no. on MCB B type 10A – EM ballast with Compensation Capacitor.	-
		Max. lamp no. on MCB B type 16A - Mains	-
		Max. lamp no. on MCB B type 16A – EM ballast without Compensation Capacitor.	-
		Max. lamp no. on MCB B type 16A – EM ballast with Compensation Capacitor.	-
		Ballast Compatibility	HF
Light Technical		Temperature	
Color Code	830 [CCT of 3000K]	T-Case Maximum (Nom)	65 °C
Beam Angle (Nom)	120 degree(s)		
Luminous Flux	720 lm		
Color Designation	White (WH)		
Correlated Color Temperature (Nom)	3000 K		
Luminous Efficacy (rated) (Nom)	110 lm/W		
Color Consistency	<6		
Color rendering index (CRI)	82		
LLMF At End Of Nominal Lifetime (Nom)	70 %		
Photobiological safety according to EN 62471	RG1		
Operating and Electrical			
Line Frequency	20K-80K Hz		
Input Frequency	20K-80K Hz		
Power Consumption	6.5 W		

CorePro LED PLT 4P

Controls and Dimming

Dimmable	No
----------	----

Mechanical and Housing

Bulb Finish	Frosted
Bulb Material	Plastic
Product Length	100 mm
Bulb Shape	PL-T
Net Weight (Piece)	0.115 kg

Approval and Application

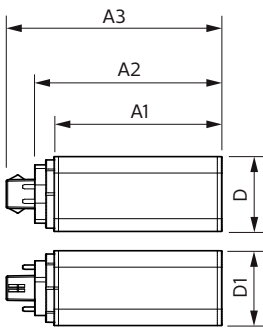
Energy Efficiency Class	F
Energy Saving Product	Yes
Approval Marks	RoHS compliance KEMA Keur certificate
Energy Consumption kWh/1000 h	7 kWh
EPREL Registration Number	1361420
CE mark	Yes

EU RoHS compliant	Yes
Ambient temperature range	-20 °C to 35 °C

Product Data

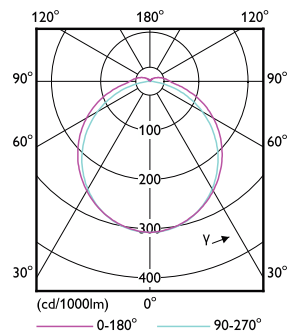
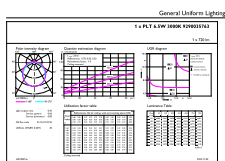
Order product name	CorePro LED PLT HF 6.5W 830 4P GX24q-2
Full product name	CorePro LED PLT HF 6.5W 830 4P GX24q-2
Full product code	871951448776500
Order code	929003576302
Material Nr. (12NC)	929003576302
Numerator - Quantity Per Pack	1
EAN/UPC - Product/Case	8719514487765
Numerator - Packs per outer box	20
EAN/UPC - Case	8719514487772

Dimensional drawing



Product	D1	D	A1	A2	A3
CorePro LED PLT HF 6.5W 830 4P GX24q-2	42 mm	42 mm	93 mm	103 mm	119 mm

Photometric data

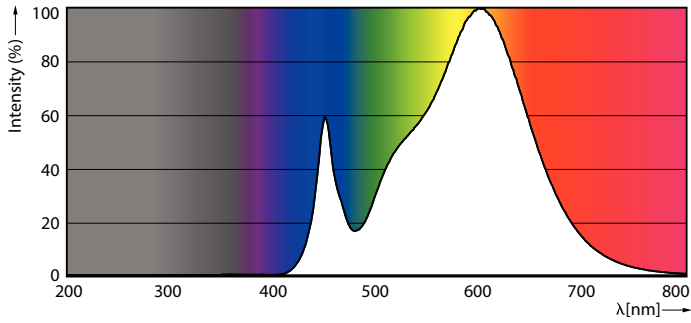


General uniform lighting - CorePro LED PLT HF 6.5W 830 4P GX24q-2

Light Distribution Diagram - CorePro LED PLT HF 6.5W 830 4P GX24q-2

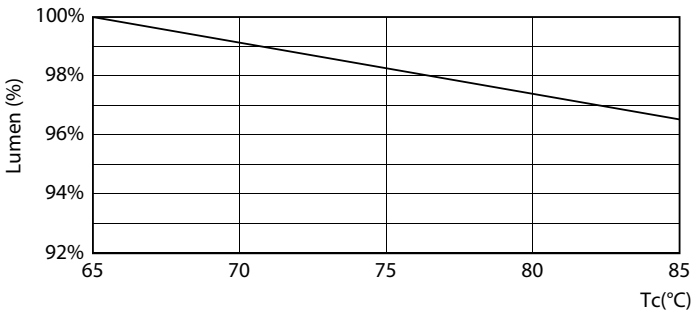
CorePro LED PLT 4P

Photometric data

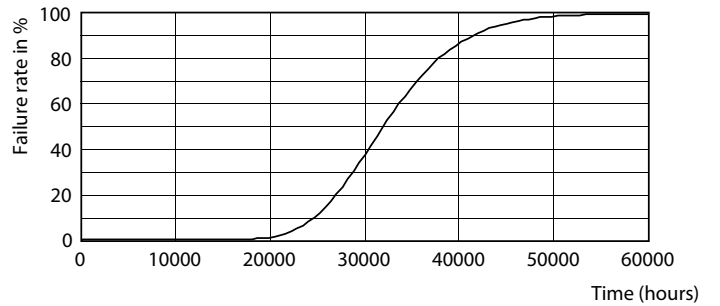


Spectral Power Distribution Colour - CorePro LED PLT HF 6.5W 830 4P GX24q-2

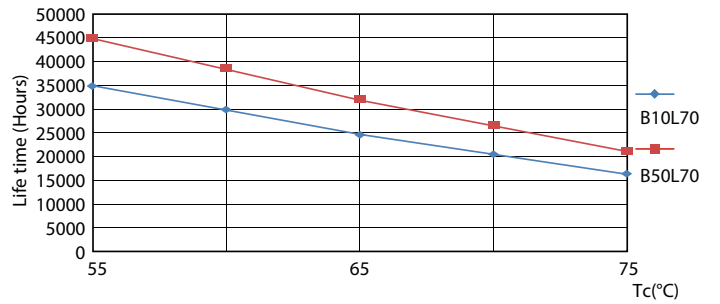
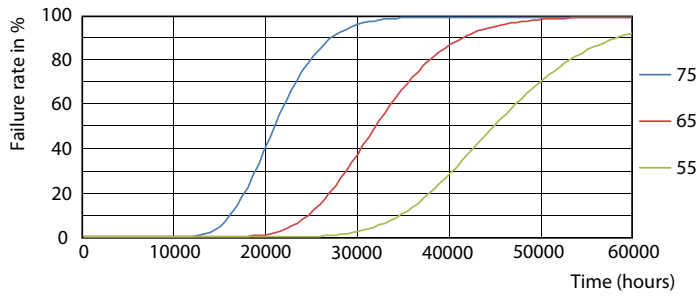
Lifetime



Lumen Maintenance Diagram - CorePro LED PLT HF 6.5W 830 4P GX24q-2



Life Expectancy Diagram

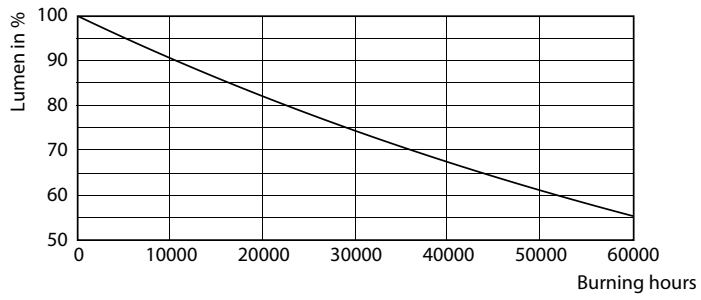


FailureRate

LifetimeVsTc

CorePro LED PLT 4P

Lifetime



Lumen Maintenance Diagram - CorePro LED PLT HF 6.5W 830 4P GX24q-2

