



# MASTER LEDtube InstantFit HF T8



## MAS LEDtube HF 1500mm UO 24W830 T8

Philips MASTER LEDtube InstantFit T8 integrates a LED light source into a traditional fluorescent form factor. Its unique design creates a perfectly uniform visual appearance which cannot be distinguished from traditional fluorescent. Philips MASTER LEDtube InstantFit T8 is the ideal solution for customers who have higher light requirements and want to maximize value over lifetime. Full energy savings & longer lifetime result in attractive payback times and TCO benefits.

### Warnings and Safety

- NOTES: The overall energy efficiency and light distribution of any installation that uses these lamps are determined by the design of the installation.

### Product data

General Information	
Cap-Base	G13 ROT
Nominal lifetime	75,000 hour(s)
Switching Cycle	50,000
Lighting Technology	LED
Flux measurement reference	Sphere

Light Technical	
Color Code	830 [CCT of 3000K]
Beam Angle (Nom)	160 degree(s)
Luminous Flux	3,500 lm
Luminous Efficacy (rated) (Nom)	145 lm/W
Color Designation	White (WH)
Correlated Color Temperature (Nom)	3000 K
Color Consistency	<6

Color rendering index (CRI)	80
LLMF At End Of Nominal Lifetime (Nom)	70 %
Flickering value (PstLM) - Flickering value as per EN 61000-3-3	0.5
Stroboscopic effect visibility measure (SVM)	0.2
Photobiological safety according to EN 62471	RG0

Operating and Electrical	
Line Frequency	20000-75000 Hz
Input Frequency	20000-75000 Hz
Power Consumption	24 W
Lamp Current (Max)	750 mA
Lamp Current (Min)	300 mA
Starting Time (Nom)	0.5 s
Warm-up time to 60% light	0.5 s

# MASTER LEDtube InstantFit HF T8

Power Factor (Fraction)	0.9
Voltage (Nom)	30-80 V
LED alternative to fluorescent lamp power	58 W
Inrush current at mains	-
Max. lamp no. on MCB B type 10A – Mains	-
Max. lamp no. on MCB B type 10A – EM ballast without Compensation Capacitor.	-
Max. lamp no. on MCB B type 10A – EM ballast with Compensation Capacitor.	-
Max. lamp no. on MCB B type 16A – Mains	-
Max. lamp no. on MCB B type 16A – EM ballast without Compensation Capacitor.	-
Max. lamp no. on MCB B type 16A – EM ballast with Compensation Capacitor.	-
Ballast Compatibility	HF

## Temperature

Ambient temperature range	-20 °C to 45 °C
T-Case Maximum (Nom)	55 °C

## Controls and Dimming

Dimmable	Yes - Check ballast compatibility
----------	-----------------------------------

## Mechanical and Housing

Bulb Finish	Frosted
Bulb Material	Plastic
Product Length	1,500 mm
Bulb Shape	T8

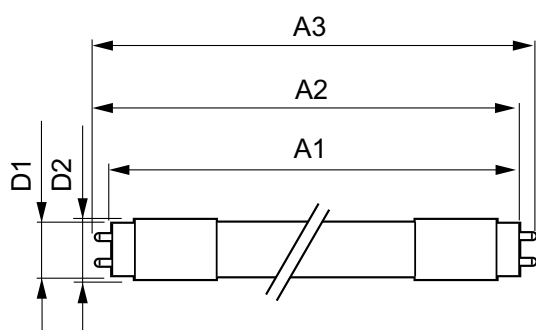
## Approval and Application

Energy Efficiency Class	D
Energy Saving Product	Yes
Approval Marks	RoHS compliance CE marking KEMA Keur certificate ENEC certificate
Energy Consumption kWh/1000 h	24 kWh
EPREL Registration Number	1165506
CE mark	Yes
EU RoHS compliant	Yes

## Product Data

Order product name	MAS LEDtube HF 1500mm UO 24W830 T8
Full product name	MAS LEDtube HF 1500mm UO 24W830 T8
Full product code	871951446706400
Order code	929003554302
Material Nr. (12NC)	929003554302
Numerator - Quantity Per Pack	1
Net Weight (Piece)	0.280 kg
EAN/UPC - Product/Case	8719514467064
Numerator - Packs per outer box	20
EAN/UPC - Case	8719514467071

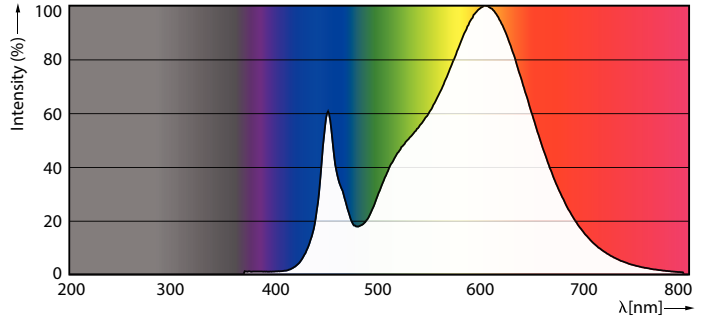
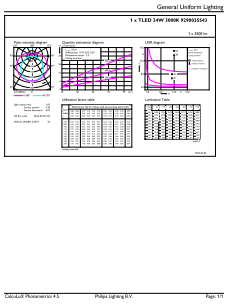
## Dimensional drawing



Product	D1	D2	A1	A2	A3
MAS LEDtube HF 1500mm UO 24W830 T8	25.8 mm	28 mm	1,498.8 mm	1,505.9 mm	1,513 mm

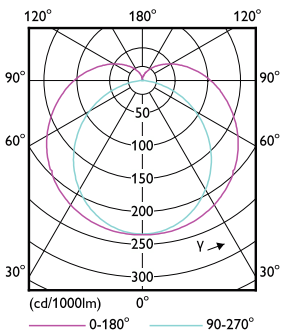
# MASTER LEDtube InstantFit HF T8

## Photometric data



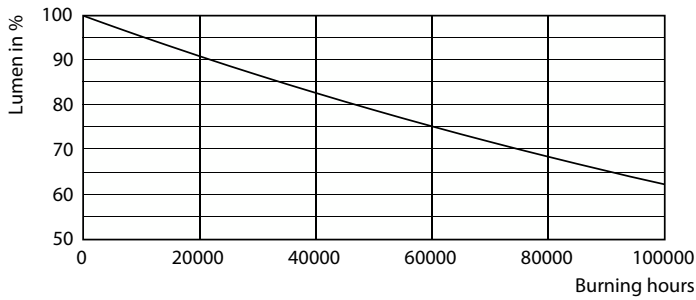
General uniform lighting - MAS LEDtube HF 1500mm UO 24W830 T8

Spectral Power Distribution Colour - MAS LEDtube HF 1500mm UO 24W830 T8

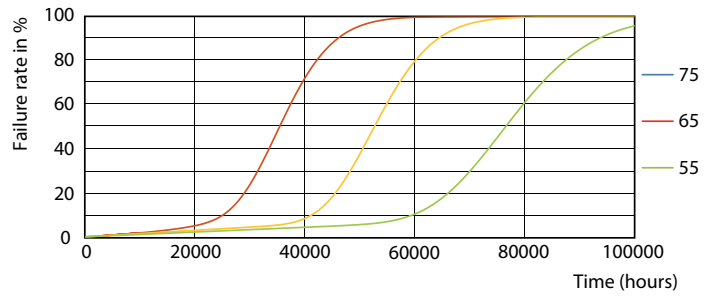


Light Distribution Diagram - MAS LEDtube HF 1500mm UO 24W830 T8

## Lifetime



Lumen Maintenance Diagram - MAS LEDtube HF 1500mm UO 24W830 T8



FailureRate

# MASTER LEDtube InstantFit HF T8

## Lifetime



Lumen Maintenance Diagram - MAS LEDtube HF 1500mm UO 24W830 T8

Life Expectancy Diagram



LifetimeVsTc

