



CorePro LED PLL



CorePro LED PLL EM/Mains 12W 830 4P

Philips CorePro LED PLL is the ideal uplamping solution for downlights & luminaires in a wide range of general lighting applications. It integrates a LED light source into a traditional fluorescent form factor to offer superb energy savings over a lifetime that's twice as long as fluorescent alternatives.

Product data

General Information	
Cap base	2G11
Nominal lifetime	30,000 h
Switching Cycle	200,000
Lighting Technology	LED
Flux measurement reference	Sphere

Light Technical	
Colour Code	830 [CCT of 3000K]
Beam angle (nom.)	160 degree(s)
Luminous Flux	1,440 lm
Luminous efficacy (rated) (nom.)	120 lm/W
Colour designation	White (WH)
Correlated Colour Temperature	3000 K
Colour consistency	<6
Colour rendering index (CRI)	80
LLMF at end of nominal lifetime (nom.)	70 %
Flickering value (PstLM)	1
Stroboscopic effect	0.4
Photobiological safety according to EN 62471	RG0

Operating and Electrical	
Line Frequency	50 to 60 Hz

Input frequency	50 to 60 Hz
Power Consumption	12 W
Lamp current (nom.)	60 mA
Starting time (nom.)	0.5 s
Warm-up time to 60% light	0.5 s
Power Factor (Fraction)	0.9
Voltage (nom.)	220-240 V
LED alternative to fluorescent lamp power	24 W
Inrush current at mains	8
Max. lamp no. on MCB B type 10A – Mains	90
Max. lamp no. on MCB B type 10A – EM ballast without Compensation Capacitor.	105
Max. lamp no. on MCB B type 10A – EM ballast with Compensation Capacitor.	15
Max. lamp no. on MCB B type 16A – Mains	150
Max. lamp no. on MCB B type 16A – EM ballast without Compensation Capacitor.	170
Max. lamp no. on MCB B type 16A – EM ballast with Compensation Capacitor.	25
Ballast Compatibility	EM

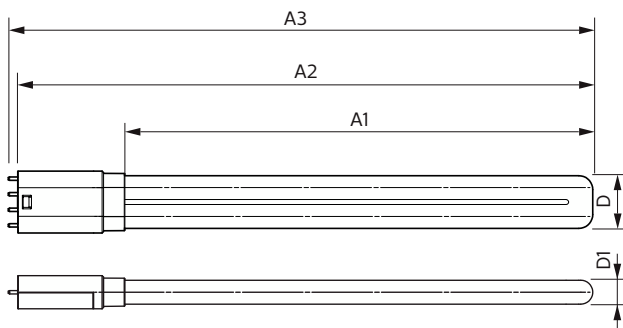
Temperature	
Ambient temperature range	-20°C to 45°C

CorePro LED PLL

T-Case maximum (nom.)	70 °C
Controls and Dimming	
Dimmable	No
Mechanical and Housing	
Lamp Finish	Frosted
Bulb material	Glass
Product length	300 mm
Bulb shape	PL-L
Approval and Application	
Energy Efficiency Class	E
Energy-saving product	Yes
Approval marks	RoHS compliance KEMA Keur certificate
Energy consumption kWh/1,000 hours	12 kWh
EPREL registration number	1370825

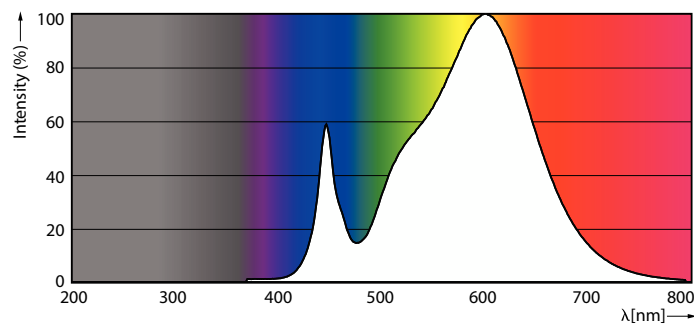
EU RoHS compliant	Yes
Product Data	
Order product name	CorePro LED PLL EM/Mains 12W 830 4P
Full product name	CorePro LED PLL EM/Mains 12W 830 4P
Full EOC	872016915703300
Order code	15703300
Material no. (12 NC)	929003592402
Numerator – quantity per pack	1
Net Weight (Piece)	0.113 kg
EAN/UPC – Product/Case	8720169157033
Numerator – packs per outer box	10
EAN/UPC - Case	8720169157040

Dimensional drawing

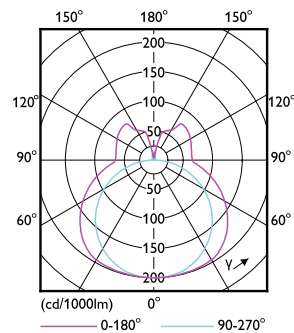


Product	D1	D	A1	A2	A3
CorePro LED PLL EM/Mains 12W 830 4P	17 mm	38 mm	250 mm	312 mm	319 mm

Photometric data



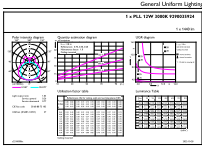
Spectral Power Distribution Colour - CorePro LED PLL EM/Mains 12W 830 4P



Light Distribution Diagram - CorePro LED PLL EM/Mains 12W 830 4P

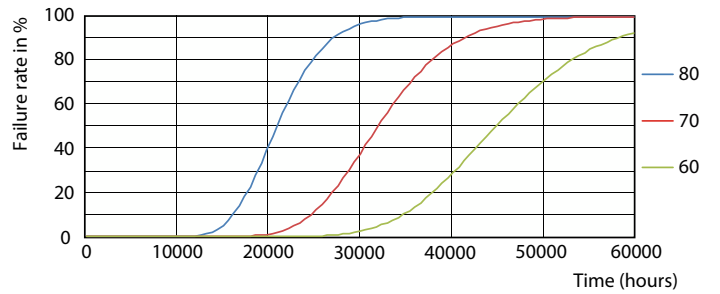
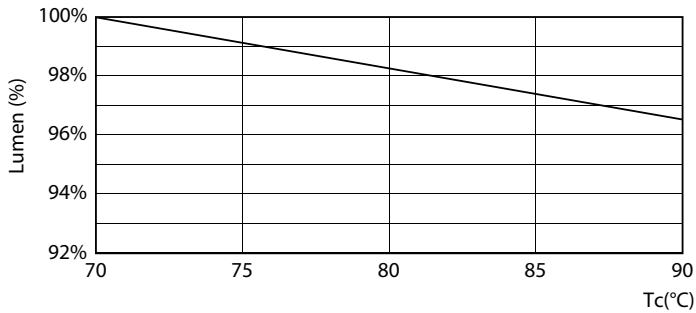
CorePro LED PLL

Photometric data

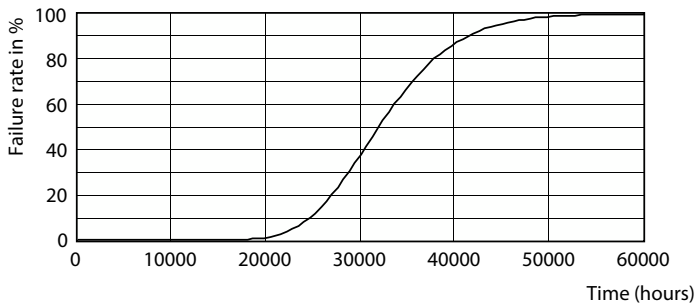


General uniform lighting - CorePro LED PLL EM/Mains 12W 830 4P

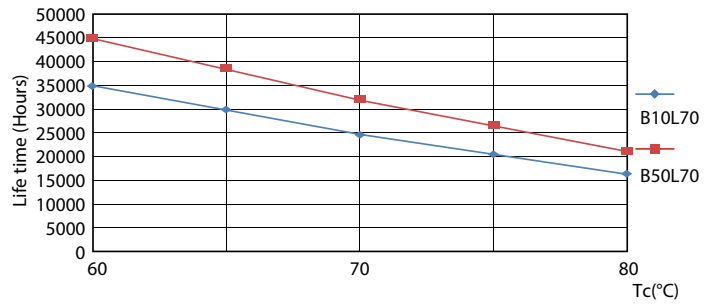
Lifetime



Lumen Maintenance Diagram - CorePro LED PLL EM/Mains 12W 830 4P



FailureRate

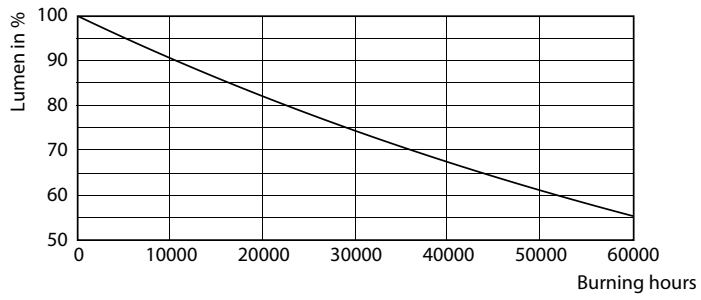


Life Expectancy Diagram

LifetimeVsTc

CorePro LED PLL

Lifetime



Lumen Maintenance Diagram - CorePro LED PLL EM/Mains 12W 830 4P

