



# CorePro LEDtube InstantFit HF T5



## CorePro LEDtube HF 1500mm HO 26.7W 840T5

CorePro LEDtube InstantFit HF T5 is the quick and easy way to replace T5 fluorescent tubes with a fast payback time. Designed with industry leading ballast compatibility, the product is ideal for your everyday lighting jobs. With simply plug-and-play installation, it improves energy efficiency immediately and lasts for longer than conventional T5.

### Product data

General Information	
Cap base	G5
Nominal lifetime	50,000 h
Switching Cycle	50,000
Lighting Technology	LED
Flux measurement reference	Sphere
Light Technical	
Colour Code	840 [CCT of 4000K]
Beam angle (nom.)	200 degree(s)
Luminous Flux	3,900 lm
Luminous efficacy (rated) (nom.)	146 lm/W
Colour designation	Cool White (CW)
Correlated Colour Temperature	4000 K
Colour consistency	<6
Colour rendering index (CRI)	80
LLMF at end of nominal lifetime (nom.)	70 %
Photobiological safety according to EN 62471	RG0

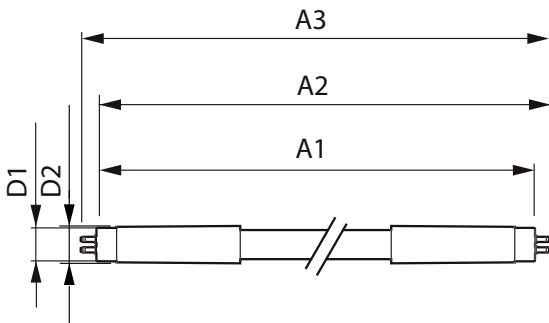
Operating and Electrical	
Input frequency	20 K to 140 K Hz
Power Consumption	26.7 W
Lamp current (max.)	420 mA
Lamp current (min.)	150 mA
Starting time (nom.)	0.5 s
Warm-up time to 60% light	0.5 s
Power Factor (Fraction)	0.9
Voltage (nom.)	60-120 V
LED alternative to fluorescent lamp power	49 W
Inrush current at mains	-
Max. lamp no. on MCB B type 10A — Mains	-
Max. lamp no. on MCB B type 10A – EM ballast without Compensation Capacitor.	-
Max. lamp no. on MCB B type 10A – EM ballast with Compensation Capacitor.	-
Max. lamp no. on MCB B type 16A — Mains	-
Max. lamp no. on MCB B type 16A – EM ballast without Compensation Capacitor.	-

# CorePro LEDtube InstantFit HF T5

Max. lamp no. on MCB B type 16A – EM ballast with Compensation Capacitor.	-
Ballast Compatibility	HF
<b>Temperature</b>	
Ambient temperature range	-20 to +45 °C
T-Case maximum (nom.)	45 °C
<b>Controls and Dimming</b>	
Dimmable	No
<b>Mechanical and Housing</b>	
Lamp Finish	Frosted
Bulb material	Glass
Product length	1,500 mm
Bulb shape	T5
<b>Approval and Application</b>	
Energy Efficiency Class	D
Energy-saving product	Yes
Approval marks	RoHS compliance KEMA Keur certificate

Energy consumption kWh/1,000 hours	27 kWh
EPREL registration number	1857686
CE mark	Yes
EU RoHS compliant	Yes
<b>Product Data</b>	
Order product name	CorePro LEDtube HF 1500mm HO 26.7W 840T5
Full product name	CorePro LEDtube HF 1500mm HO 26.7W 840T5
Full EOC	872016929566700
Order code	29566700
Material no. (12 NC)	929003775402
Numerator – quantity per pack	1
Net Weight (Piece)	0.196 kg
EAN/UPC – Product/Case	8720169295667
Numerator – packs per outer box	10
EAN/UPC - Case	8720169295674

## Dimensional drawing

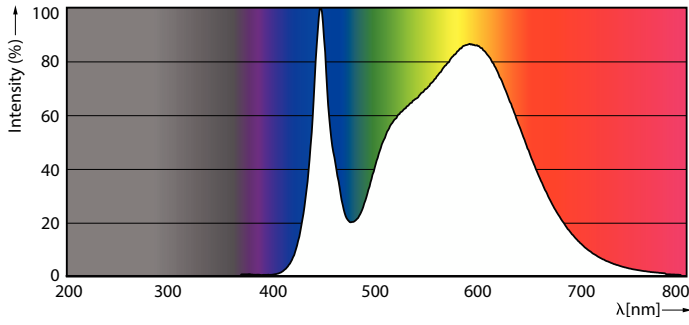


## Product

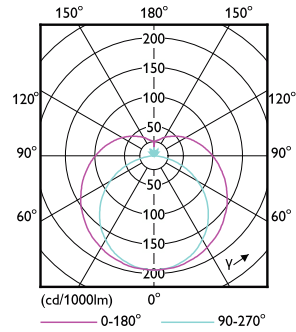
CorePro LEDtube HF 1500mm HO 26.7W 840T5

# CorePro LEDtube InstantFit HF T5

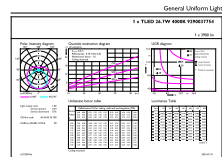
## Photometric data



Spectral Power Distribution Colour - CorePro LEDtube HF 1500mm HO 26.7W 840T5



Light Distribution Diagram - CorePro LEDtube HF 1500mm HO 26.7W 840T5

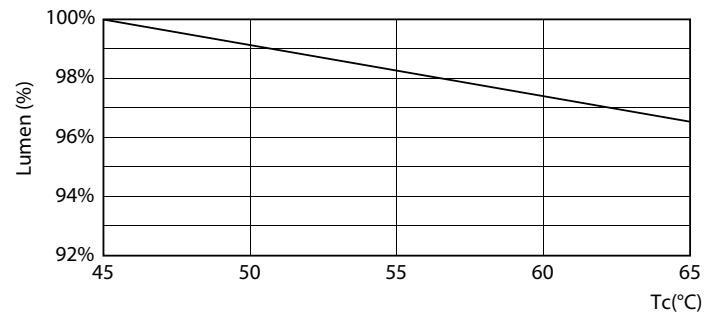


General uniform lighting - CorePro LEDtube HF 1500mm HO 26.7W 840T5

## Lifetime



Life Expectancy Diagram



Lumen Maintenance Diagram - CorePro LEDtube HF 1500mm HO 26.7W 840T5

# CorePro LEDtube InstantFit HF T5

## Lifetime



FailureRate

LifetimeVsTc



Lumen Maintenance Diagram - CorePro LEDtube HF 1500mm HO 26.7W 840T5

