



CorePro LEDtube InstantFit HF T5



CorePro LEDtube HF 1200mm HO 26.7W 865T5

CorePro LEDtube InstantFit HF T5 is the quick and easy way to replace T5 fluorescent tubes with a fast payback time. Designed with industry leading ballast compatibility, the product is ideal for your everyday lighting jobs. With simply plug-and-play installation, it improves energy efficiency immediately and lasts for longer than conventional T5.

Product data

General Information	
Cap base	G5
Nominal lifetime	50,000 h
Switching Cycle	50,000
Lighting Technology	LED
Flux measurement reference	Sphere
Light Technical	
Colour Code	865 [CCT of 6500K]
Beam angle (nom.)	200 degree(s)
Luminous Flux	3,900 lm
Luminous efficacy (rated) (nom.)	146 lm/W
Colour designation	Cool Daylight
Correlated Colour Temperature	6500 K
Colour consistency	<6
Colour rendering index (CRI)	80
LLMF at end of nominal lifetime (nom.)	70 %
Photobiological safety according to EN 62471	RG0

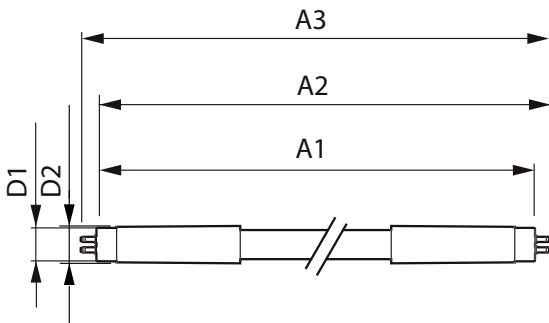
Operating and Electrical	
Input frequency	30 K to 60 K Hz
Power Consumption	26.7 W
Lamp current (max.)	620 mA
Lamp current (min.)	300 mA
Starting time (nom.)	0.5 s
Warm-up time to 60% light	0.5 s
Power Factor (Fraction)	0.9
Voltage (nom.)	20-90 V
LED alternative to fluorescent lamp power	54 W
Inrush current at mains	-
Max. lamp no. on MCB B type 10A — Mains	-
Max. lamp no. on MCB B type 10A – EM ballast without Compensation Capacitor.	-
Max. lamp no. on MCB B type 10A – EM ballast with Compensation Capacitor.	-
Max. lamp no. on MCB B type 16A — Mains	-
Max. lamp no. on MCB B type 16A – EM ballast without Compensation Capacitor.	-

CorePro LEDtube InstantFit HF T5

Max. lamp no. on MCB B type 16A – EM ballast with Compensation Capacitor.	-
Ballast Compatibility	HF
Temperature	
Ambient temperature range	-20 to +45 °C
T-Case maximum (nom.)	45 °C
Controls and Dimming	
Dimmable	No
Mechanical and Housing	
Lamp Finish	Frosted
Bulb material	Glass
Product length	1,200 mm
Bulb shape	T5
Approval and Application	
Energy Efficiency Class	D
Energy-saving product	Yes
Approval marks	RoHS compliance KEMA Keur certificate

Energy consumption kWh/1,000 hours	27 kWh
EPREL registration number	1857690
CE mark	Yes
EU RoHS compliant	Yes
Product Data	
Order product name	CorePro LEDtube HF 1200mm HO 26.7W 865T5
Full product name	CorePro LEDtube HF 1200mm HO 26.7W 865T5
Full EOC	872016929562900
Order code	29562900
Material no. (12 NC)	929003775202
Numerator – quantity per pack	1
Net Weight (Piece)	0.160 kg
EAN/UPC – Product/Case	8720169295629
Numerator – packs per outer box	10
EAN/UPC - Case	8720169295636

Dimensional drawing

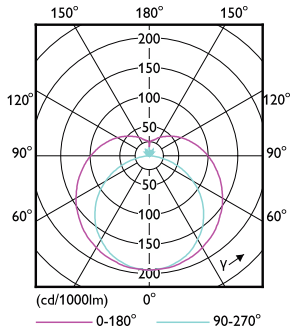


Product

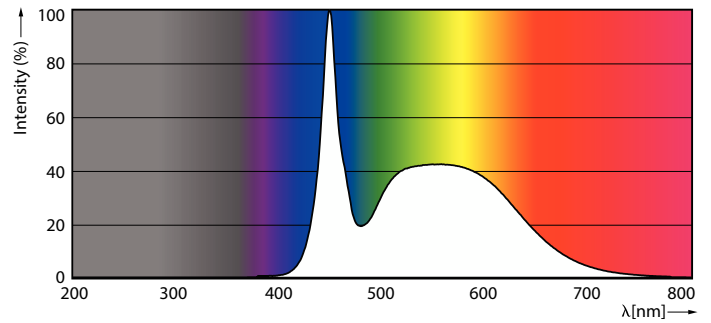
CorePro LEDtube HF 1200mm HO 26.7W 865T5

CorePro LEDtube InstantFit HF T5

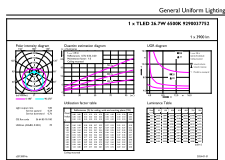
Photometric data



Light Distribution Diagram - CorePro LEDtube HF 1200mm HO 26.7W 865T5



Spectral Power Distribution Colour - CorePro LEDtube HF 1200mm HO 26.7W 865T5

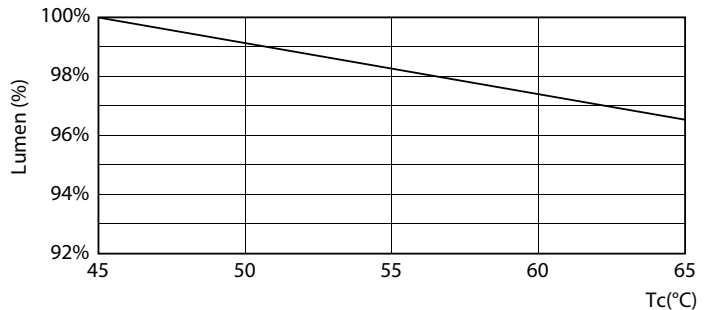


General uniform lighting - CorePro LEDtube HF 1200mm HO 26.7W 865T5

Lifetime



Life Expectancy Diagram



Lumen Maintenance Diagram - CorePro LEDtube HF 1200mm HO 26.7W 865T5

CorePro LEDtube InstantFit HF T5

Lifetime



FailureRate

LifetimeVsTc



Lumen Maintenance Diagram - CorePro LEDtube HF 1200mm HO 26.7W 865T5

