



# CorePro LEDtube InstantFit HF T5



## CorePro LEDtube HF 1200mm HO 26.7W 830T5

CorePro LEDtube InstantFit HF T5 is the quick and easy way to replace T5 fluorescent tubes with a fast payback time. Designed with industry leading ballast compatibility, the product is ideal for your everyday lighting jobs. With simply plug-and-play installation, it improves energy efficiency immediately and lasts for longer than conventional T5.

### Product data

General Information	
Cap base	G5
Nominal lifetime	50,000 h
Switching Cycle	50,000
Lighting Technology	LED
Flux measurement reference	Sphere
Light Technical	
Colour Code	830 [CCT of 3000K]
Beam angle (nom.)	200 degree(s)
Luminous Flux	3,700 lm
Luminous efficacy (rated) (nom.)	138 lm/W
Colour designation	White (WH)
Correlated Colour Temperature	3000 K
Colour consistency	<6
Colour rendering index (CRI)	80
LLMF at end of nominal lifetime (nom.)	70 %
Photobiological safety according to EN 62471	RG0

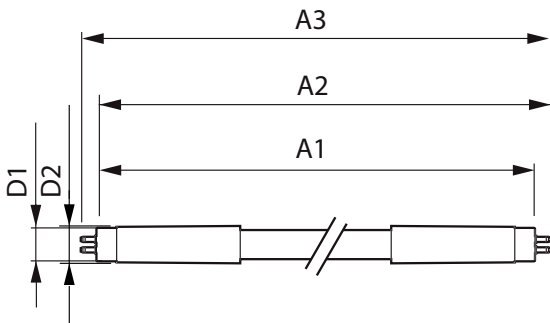
Operating and Electrical	
Input frequency	30 K to 60 K Hz
Power Consumption	26.7 W
Lamp current (max.)	620 mA
Lamp current (min.)	300 mA
Starting time (nom.)	0.5 s
Warm-up time to 60% light	0.5 s
Power Factor (Fraction)	0.9
Voltage (nom.)	20-90 V
LED alternative to fluorescent lamp power	54 W
Inrush current at mains	-
Max. lamp no. on MCB B type 10A — Mains	-
Max. lamp no. on MCB B type 10A – EM ballast without Compensation Capacitor.	-
Max. lamp no. on MCB B type 10A – EM ballast with Compensation Capacitor.	-
Max. lamp no. on MCB B type 16A — Mains	-
Max. lamp no. on MCB B type 16A – EM ballast without Compensation Capacitor.	-

# CorePro LEDtube InstantFit HF T5

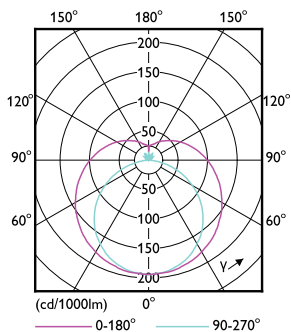
Max. lamp no. on MCB B type 16A – EM ballast with Compensation Capacitor.	-
Ballast Compatibility	HF
<b>Temperature</b>	
Ambient temperature range	-20 to +45 °C
T-Case maximum (nom.)	45 °C
<b>Controls and Dimming</b>	
Dimmable	No
<b>Mechanical and Housing</b>	
Lamp Finish	Frosted
Bulb material	Glass
Product length	1,200 mm
Bulb shape	T5
<b>Approval and Application</b>	
Energy Efficiency Class	E
Energy-saving product	Yes
Approval marks	RoHS compliance KEMA Keur certificate

Energy consumption kWh/1,000 hours	27 kWh
EPREL registration number	1857688
CE mark	Yes
EU RoHS compliant	Yes
<b>Product Data</b>	
Order product name	CorePro LEDtube HF 1200mm HO 26.7W 830T5
Full product name	CorePro LEDtube HF 1200mm HO 26.7W 830T5
Full EOC	872016929558200
Order code	29558200
Material no. (12 NC)	929003775002
Numerator – quantity per pack	1
Net Weight (Piece)	0.160 kg
EAN/UPC – Product/Case	8720169295582
Numerator – packs per outer box	10
EAN/UPC - Case	8720169295599

## Dimensional drawing



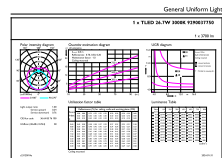
## Photometric data



Light Distribution Diagram - CorePro LEDtube HF 1200mm HO 26.7W 830T5

## Product

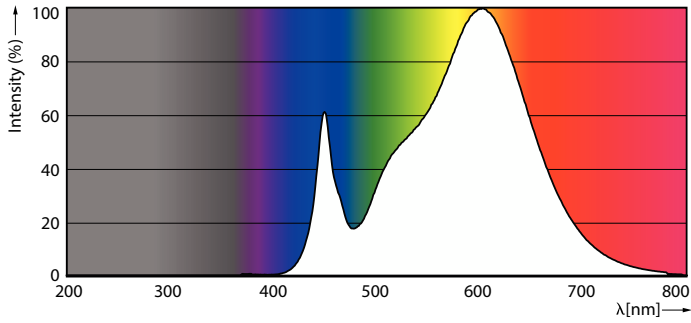
CorePro LEDtube HF 1200mm HO 26.7W 830T5



General uniform lighting - CorePro LEDtube HF 1200mm HO 26.7W 830T5

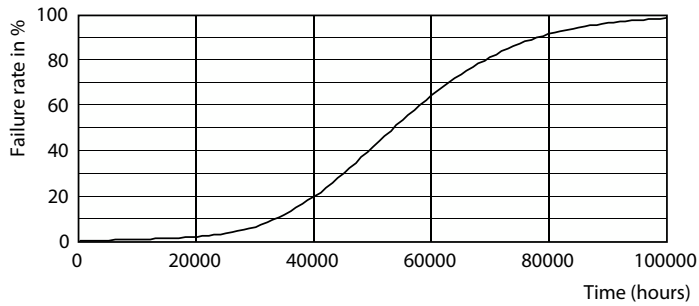
# CorePro LEDtube InstantFit HF T5

## Photometric data

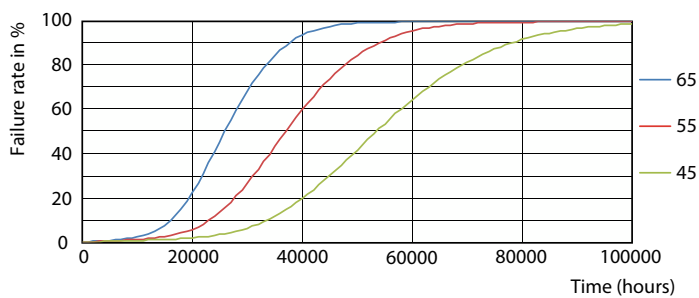


Spectral Power Distribution Colour - CorePro LEDtube HF 1200mm HO 26.7W 830T5

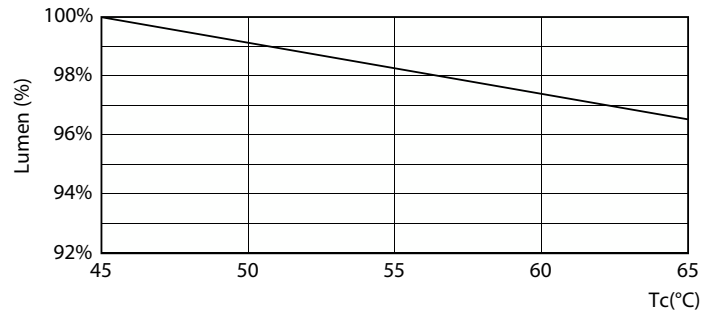
## Lifetime



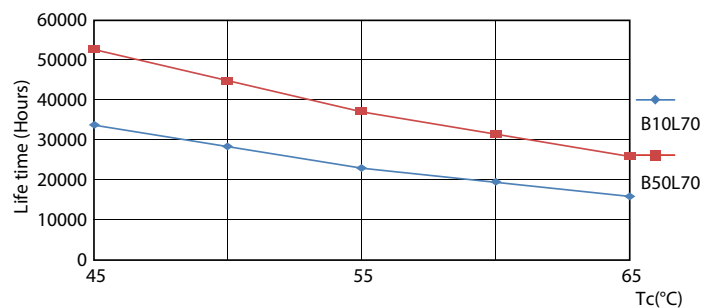
Life Expectancy Diagram



FailureRate



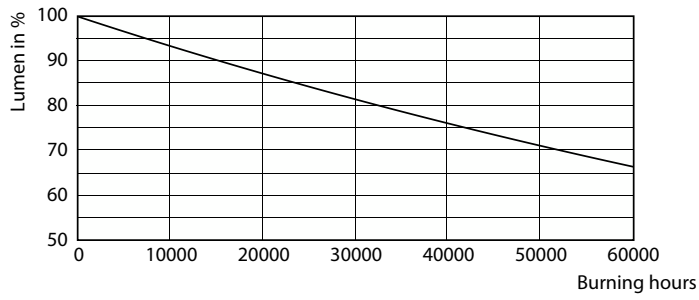
Lumen Maintenance Diagram - CorePro LEDtube HF 1200mm HO 26.7W 830T5



LifetimeVsTc

# CorePro LEDtube InstantFit HF T5

## Lifetime



Lumen Maintenance Diagram - CorePro LEDtube HF 1200mm HO 26.7W 830T5

